

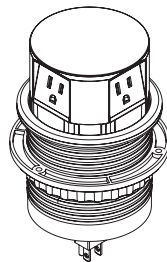
# 290x105mm



Italian Design and Innovation

## Instruction Manual

**Pop Up Socket**  
**3 Outlets and 2 USB**



BEA05G

### CUTOUT AND MOUNTING STEPS:

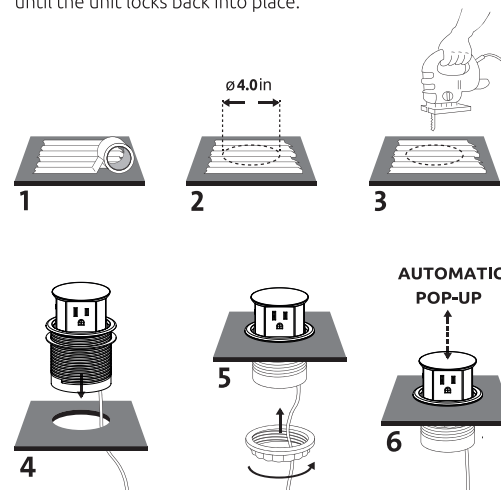
- Select the desired location of a countertop or desktop.  
If used on a countertop, the device must be at least 10" from the stove top and other heating sources.
- The selected location must be at least 0.79 inch (20mm) away from the edge of the countertop or similar surface.
- The mounting surface must be between 0.79 inch (20mm) and 2.16 inch (55mm) thick.

### Installation Instructions:

1. Lay blue painter's tape on the surface of the wood.
2. Mark the position of the hole and drill through the tape into the wood. Painter's tape is a better choice than all-purpose tan tape because it adheres less strongly and is easier to pull off.
3. Cut a 3.9 inch to 4.0 inch hole in surface of countertop.
4. Feed the power cord through the hole in the countertop first, followed by the main unit, pushing down until gasket rests on countertop.
5. Feed the power cord through the locking flange and turn

flange counterclockwise until locked in place against the underside of the countertop.

6. Plug the main unit into a wall outlet underneath the countertop. To open the pop up socket, firmly press down on the cover. To close the device, push down on the cover until the unit locks back into place.



### Technical specifications

3 receptacles 2P+E 15A  
2 x USB: type A+C 3.0A with Quick Charger 3.0  
With overload protection  
14AWGx3C SJT PVC cable, length 6ft  
15A/125V~, Max.1875W, 60Hz

### Use specifications

Stock and use temperature: 23°F (-5°C) to 104°F (40°C)

### NOTE:

1. Please read this manual carefully before assembly and save it for reference;
2. Only for indoor use;
3. Please keep the product in a dry environment, and environment temperature cannot exceed 95°F (35°C)
4. Device connected to AC socket must have ground connection.
5. If the rating of the appliance (voltage, power, temperature, frequency etc.) exceeds the below SPECIFICATION, it may damage the appliance.
6. In case of failure of the product, do not use it again or open it for repair without permission.
7. This product cannot be treated as unclassified municipal waste and should be recycled by a separate collection facility.
8. Please contact the local government for information about food chain and damage your life and health.